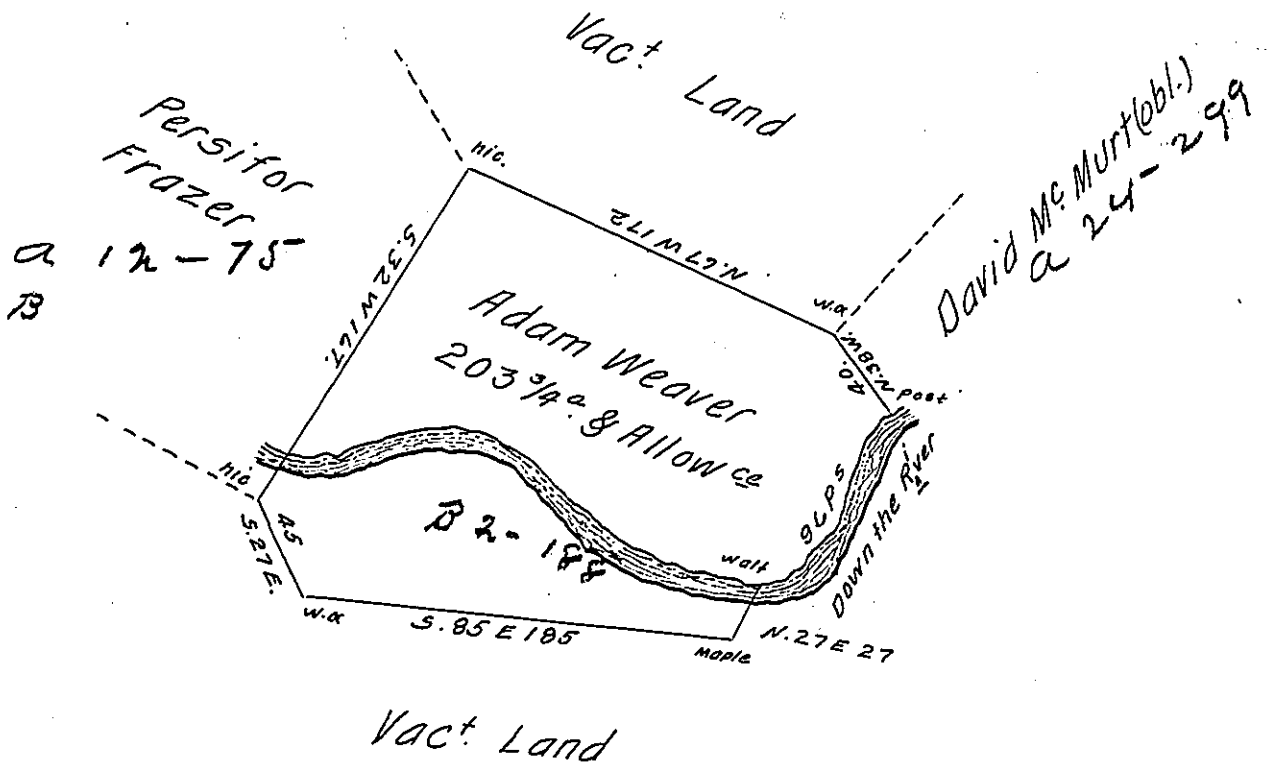


Courses & Distances on the River

- N. 60. E. 24.
- N. 22. E. 48.
- N. 40. E. 24.



Warrant to Adam Weaver dated 8th Sept 1762. Survey'd to Adam Weaver on the 18th Day of August 17(obl.). The Above Described Tract of Land Situate on the Fran(obl.) town Branch of Junitta— above the Canoe Mountain

Joshua Elder for
Rich^d Tea D. S.

IN TESTIMONY that the above is a copy of the original remaining on file in the Department of Internal Affairs of Pennsylvania, made conformably to an Act of Assembly approved the 16th day of February 1833, I have hereunto set my hand and caused the Seal of said Department to be affixed at Harrisburg, this first day of October 1907.

Henry Houder
Secretary of Internal Affairs.